

# Multi-functional Workflow Management

**Aficio™ 2022/2027/2032**



**RICOH**  
Image Communication

# Upgradeable & Easy-to-use Office Systems

Now that cost-efficiency has become a necessity, saving on your document handling costs is becoming obvious. Already an asset in most offices, multi-functional equipment helps you do exactly that. Using the Aficio™2022/2027/2032, you can reach new levels of functionality and cost-efficiency. These office systems provide output speeds of 22, 27 or 32 pages per minute and can be built into the exact solution you require. The copier mainframe can easily be expanded with the functionality you want. To print and/or scan from one device, simply add the printer/scanner module. This module comes with a Hard Disk Drive and a Network Interface Board (NIB), as well as monitoring and document management software. To fax directly from PC or save costs via Internet faxing, an optional fax module is available. No matter how much functionality you opt for, these systems boast the same high productivity and remain easy to operate. A variety of sophisticated management tools further smoothen your document flow. You can monitor the machine status, maintain the 'scan to e-mail' address book and receive incoming faxes using your PC's web browser. 'Advanced yet simple' is the Aficio™2022/2027/2032's motto. Upgradeable at any time, these multi-functional office systems will secure your document handling and cost-efficiency needs for years to come.



# Taking Care of Every Step of your Workflow

The Aficio™2022/2027/2032 have everything in store to make your office run as efficiently as possible. These systems merge user-friendly operation and versatile finishing with optimal network connectivity and easy device management. Exactly what you need to help increase productivity and efficiency.



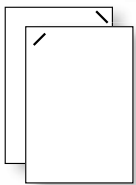
## User-friendly Original Input

The Aficio™2022/2027/2032 boast a fast-feeding 50-sheet Auto Reverse Document Feeder (ARDF). Books and magazines can be copied straight from the platen glass. Facing pages can be copied in one scan, printing each page on a separate sheet.



## Minimum Steps & Intervention

The Aficio™2022/2027/2032's large LCD touch screen intuitively guides you through all print, copy, fax and scan jobs. The panel is logically organised and a minimum of steps lead to the required result.



## Automatic Stapling

The finishing touch. Upgrade the Aficio™2022/2027/2032 with one of two finishers (for 500 or 1,000 sheets). Both offer a variety of stapling functions for professional output.

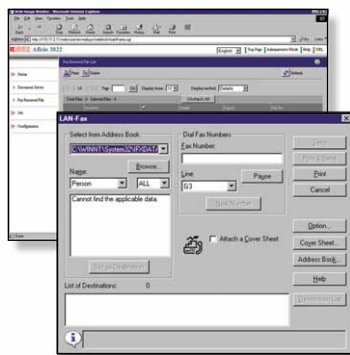


*The image on these pages is not a real photograph and slight differences in detail might appear.*



## Confidentiality & Cost-efficiency

The Aficio™2022/2027/2032 stand for efficient printing. By means of Locked Print™, classified print jobs will only be released after password confirmation. To eliminate errors and avoid unnecessary costs when producing multiple sets, you can use the Sample Print™ function. This allows you to verify the first set before releasing the remaining sets at the operation panel.



## Incoming Faxes on your PC

Without an additional server, you can store incoming faxes in the systems' memory. Using Web Image Monitor or DeskTopBinder™ V2 Lite, you can check the receiving fax data from your own PC before printing, downloading or deleting.

## Fax Directly from your PC

Via the LAN fax function, you can send fax messages directly from your own networked PC. This saves time and ensures better output quality at the receiving end. To reduce the distribution of printed faxes, faxes can be automatically forwarded by e-mail. You can even receive faxes outside the office, via your laptop.

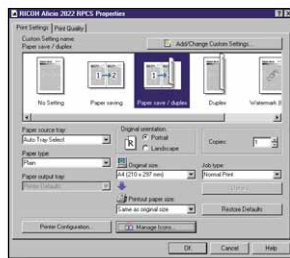
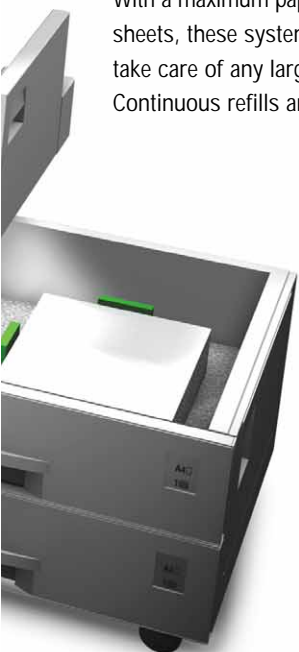
## Flexible Scanning

The Aficio™2022/2027/2032 turn digitising into a user-friendly process. Files can be scanned and stored on the document server, sent to any networked PC or even a designated folder. Alternatively, they can be sent by e-mail using for example the direct link to the company's e-mail system address book via LDAP.



## Non-stop Production

With a maximum paper capacity of 3,100 sheets, these systems can effortlessly take care of any large print/copy job. Continuous refills are history.

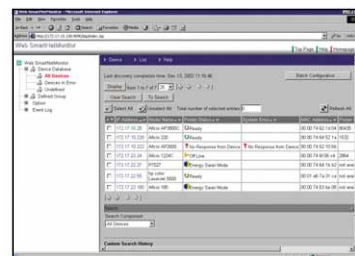


## Easy One-click Printing

Ricoh's unique printer language RPCS™ stands for fast, easy and efficient printing. Thanks to its icon-based interface, any print job - no matter how complex - is only one click away and entering print commands takes only seconds.

## Advanced Device Monitoring

Using Web SmartDeviceMonitor™, the status of networked peripherals can be monitored and checked through web browsers. Additionally, IT managers and network administrators can set user privileges, obtain complete job statistics and restrict usage.



# Meeting your Specific Demands

The Aficio™2022/2027/2032 are fully upgradeable copier-based devices. By adding optional print/scan/fax functionality and other options, you can create the ideal device to suit your precise demands. A clever all-in system that grows with your business, without the need for bulky and expensive stand-alone devices.

## Copy Genius

Thanks to the 'scan once, copy many' principle, your originals are scanned only once, stored into memory and reproduced from there. This saves time and gives you high-quality output. The Aficio™2022/2027/2032 also boast a very short warm-up time and impressive first output speed thanks to the QSU (quick start up) technology. In addition, duplexing is just as fast as simplex copying. Now everyone can save on paper and energy, while benefiting from time-saving productivity.

## Connect to Any Network

The Aficio™2022/2027/2032 integrate with virtually any network environment. A Network Interface Board (NIB) is embedded in the printer/scanner module. An IEEE 1394 interface board can be added to increase the systems' output speed, whereas the USB2.0 option enhances connectivity flexibility. Wireless LAN enables printing across the network without the need for network cables. Opting for Bluetooth ideally allows you to connect devices outside the network.

## Efficient Distribution

Using the 'scan to e-mail' function, you can send scanned files to any e-mail address in the world without the need for a designated server or extra software. Via LDAP you have direct access to the e-mail address book of your company's e-mail system. You can also manually update the e-mail address book

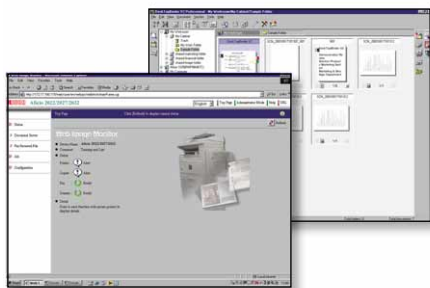
from the systems' operation panel or from your PC, via Web Image Monitor. To prevent unauthorised users from sending your document, you can rely on the client folder protection function. Before transmission there is login user name/password encryption and you receive acknowledgement via e-mail to confirm successful sending. In addition to 'scan to e-mail', you can distribute documents directly from the machine to a client folder on the network by making use of the 'scan to folder' function.

## Cost-saving Internet Faxing

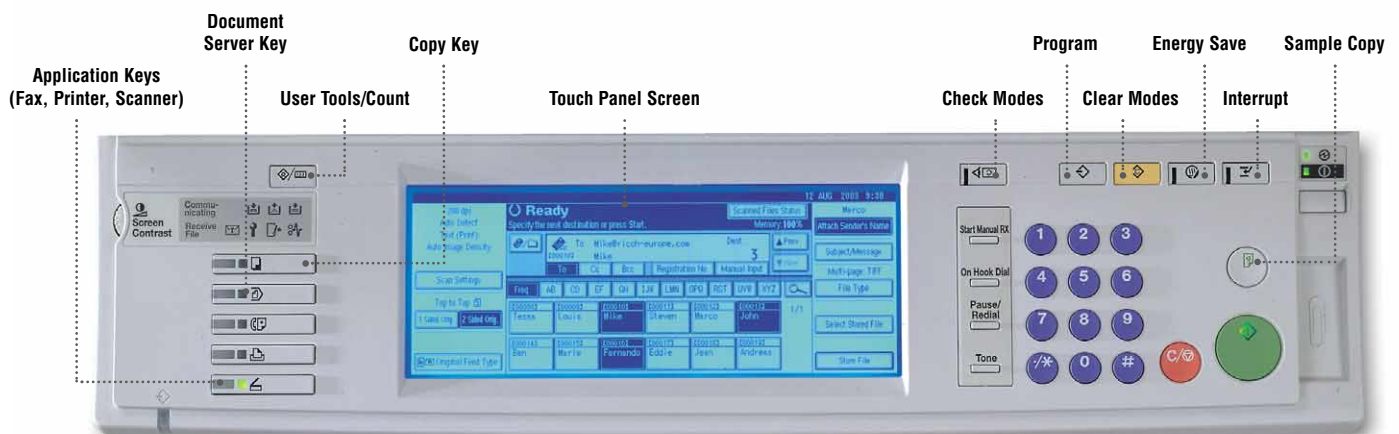
Using the Internet for long distance faxing has major advantages. By sending fax messages to PCs in e-mail format, you reduce your costs while enhancing your communication capabilities.

## Optimal Document Management

To be able to handle all jobs professionally, several document management utilities are available. For example, you can store frequently used print, copy, fax and scan documents for re-use on the machine's document server. Via the bundled DeskTopBinder™ V2 Lite or Web Image Monitor software, you can view these stored documents from your PC. Using DeskTopBinder™ V2 Lite you can merge documents of different formats into one file and view, manage, print and re-distribute the information digitally.



Using Web Image Monitor you can check the status of a single networked peripheral and monitor the document server as well as paper/toner supply through a common web browser.



Via the large LCD touch screen, all jobs - whether print, copy, fax or scan - are programmed in no time.





# Aficio™ 2022/2027/2032

## Specifications



### COPIER

Copying process:	Twin laser beam scanning and electro-photographic printing	
Copy speed:	22/27/32 copies per minute	
Resolution:	600 dpi	
Multiple copy:	Up to 99	
Warm-up time:	15 seconds	
First output speed:	Aficio™ 2022/2027:	4.9 seconds
	Aficio™ 2032:	4.5 seconds
Zoom:	25 - 400% (in 1% steps)	
Memory:	Standard:	64 MB
	Maximum:	192 MB + 20 GB Hard Disk Drive
Paper input capacity:	Standard:	2 x 500-sheet trays
	Maximum:	3,100 sheets
Paper output capacity:	Standard:	500 sheets (internal tray)
	Maximum:	1,625 sheets
Paper size:	A6 - A3	
Paper weight:	Paper tray 1:	60 - 105 g/m <sup>2</sup>
	Paper tray 2/bypass tray:	52 - 157 g/m <sup>2</sup>
	Duplex:	64 - 105 g/m <sup>2</sup>
Dimensions (W x D x H):	550 x 604 x 980 mm	
Weight:	Less than 62 kg	
Power source:	220 - 240 V, 50/60 Hz	
Power consumption:	Operation:	Less than 1.5 kW
	Energy saver mode:	Less than 7 W

### PRINTER/SCANNER (option)



### Printer

Print speed:	22/27/32 prints per minute	
Printer language/ resolution:	Standard:	PCL5e: 300/600 dpi
		PCL6: 600 dpi
		RPCS™: 200/300/600 dpi
Interface:	Standard:	Bi-directional IEEE 1284
		Ethernet 10 base-T/100 base-TX
Memory:	192 MB + 20 GB Hard Disk Drive	
Network protocol:	TCP/IP, IPX/SPX, NetBEUI, AppleTalk	
Supported networks:	Windows® 95/98/Me/NT4.0/2000/XP/2003 Server	
	Macintosh 8.6 or later (except for v10.0.x)	
	IBM iSeries / AS/400® using OS/400 Host Print Transform	



### Scanner

Scan speed:	Maximum 51 originals per minute (MH, A4)
Resolution:	Maximum 600 dpi (TWIN: 1,200 dpi)
Original size:	A5 - A3
Output formats:	PDF/JPEG/TIFF
Bundled drivers:	Network TWAIN

Scan to e-mail:	SMTP
Destination addresses:	Maximum 500 for 1 single operation
Stored destination addresses:	Maximum 2,000
Address book:	Via LDAP
Scan to folder:	SMB or FTP protocol (with login security)
Destination:	Maximum 50 folders per job



### Software

SmartDeviceMonitor™<sup>1</sup>, Web SmartDeviceMonitor™,  
Web Image Monitor, DeskTopBinder™ V2 Lite<sup>1</sup>,  
ScanRouter™ V2 Lite<sup>1</sup>



### FAX (option)

Circuit:	PSTN, PBX	
Compatibility:	ITU-T (CCITT) G3	
	ITU-T (T.37) Internet Fax	
Modem speed:	Maximum 33.6 Kbps	
Resolution:	Standard/detail:	200 x 200/100 dpi
	Maximum:	400 x 400 dpi (option)
Compression method:	MH, MR, MMR, JBIG (option)	
Scanning speed:	Less than 1.18 seconds (200 x 100 dpi, A4)	
Memory capacity:	Standard:	8 MB
	Maximum:	8 MB + 8 MB (option)
Memory backup:	Yes	

### OTHER OPTIONS

- Platen cover
- 50-sheet Auto Reverse Document Feeder
- 100-sheet multi-bypass tray
- 2 x 500-sheet paper trays
- 2,000-sheet large capacity tray
- 125-sheet one-bin tray
- 500-sheet finisher (1 position stapling)
- 1,000-sheet finisher (3 position stapling)
- Shift sort tray
- Duplex unit (limitless)
- 20 GB Hard Disk Drive
- Adobe® PostScript® 3™ (600 dpi)
- Wireless LAN (IEEE 802.11b)
- Bluetooth
- IEEE 1394
- USB2.0
- 2nd Super G3 port
- Professional software solutions

<sup>1</sup> Bundled with printer/scanner option.

For further details and availability of models, optional apparatus and software, please consult your local Ricoh supplier.



ISO9001: 2000 certified  
ISO14001 certified

Ricoh has determined that this product meets the ENERGY STAR guidelines for energy efficiency.

Ricoh believes in conserving the earth's precious natural resources.

All brand and/or product names are trademarks of their respective owners.

Specifications and external appearance are subject to change without notice. The colour of the actual product may vary from the colour shown in the brochure.

**RICOH**  
Image Communication

For more information, please contact:

**The Copier**  
MALAYSIA SDN BHD  
YOUR BUSINESS PARTNER  
03 6140 4688 / 6141 4688  
Hotline: 1700 81 4588  
[www.thecopier.com.my](http://www.thecopier.com.my)

RICOH UK LTD, Ricoh House  
1 Puretree Crescent, Feltham  
Middlesex, TW13 7HG, UK  
Phone: +44 (0)20-8261 4000  
Fax: +44 (0)20-8261 4288

[www.ricoh.co.uk](http://www.ricoh.co.uk)

ENG/EUR - B1003N - 230970